

PART OF N.W. 1/4 SEC. 28, T.7N., R.1W., S.L.B. & M.  
**BEN LOMOND PARK SUBDIVISION**  
 BLOCK 1 LOTS 11-21, BLOCK 3 LOTS 7-9 AMENDED

134

TAXING UNIT 10

IN NORTH OGDEN CITY  
 SCALE 1" = 60'

PREFIX 17-134

SEE BOOK 16, PAGE 37-3

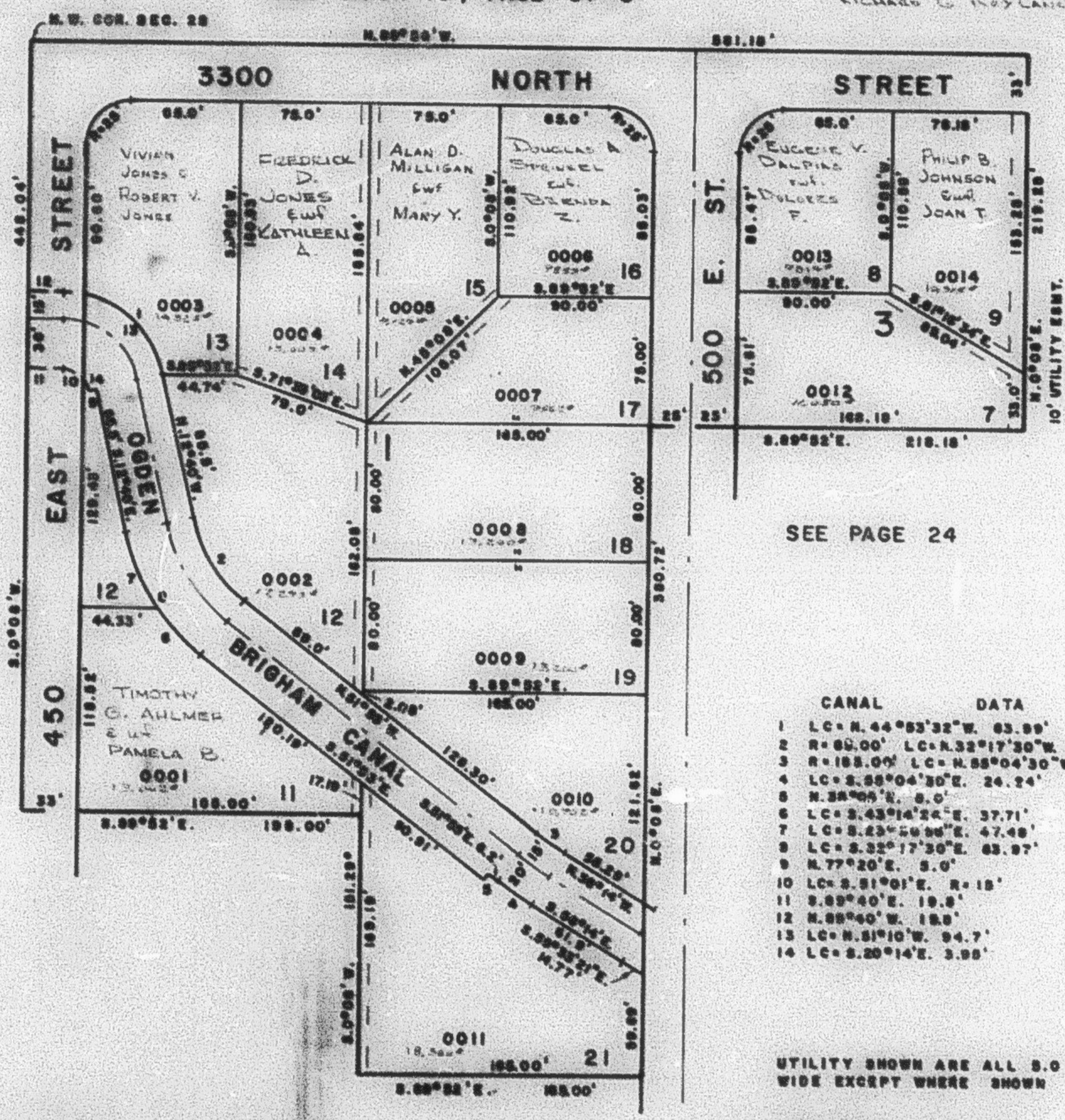
EXCEPT WHERE OTHERWISE SHOWN  
 ALL LOTS OWNED BY:  
 VICTOR S. ROYLANE - 1/2  
 RICHARD G. ROYLANE - 1/2

SEE PAGE 38

SEE PAGE 20

SEE PAGE 24

SEE PAGE 23



CANAL DATA

1	LC = N. 44° 53' 32" W. 63.99'
2	R = 60.00' LC = N. 32° 17' 30" W. 57.1'
3	R = 188.00' LC = N. 68° 04' 30" W. 20.39'
4	LC = S. 88° 04' 30" E. 24.24'
5	N. 38° 05' N. 8.0'
6	LC = S. 43° 14' 24" E. 37.71'
7	LC = S. 23° 50' 00" E. 47.48'
8	LC = S. 32° 17' 30" E. 63.97'
9	N. 77° 20' E. 8.0'
10	LC = S. 51° 01' E. R = 18'
11	S. 89° 40' E. 19.8'
12	N. 89° 40' W. 19.8'
13	LC = N. 51° 10' W. 94.7'
14	LC = S. 20° 14' E. 3.95'

UTILITY SHOWN ARE ALL 8.0 FT. WIDE EXCEPT WHERE SHOWN

FOR COMPLETE ENG. DATA SEE ORIG. DED. PLAT IN BOOK 21, PAGE 88